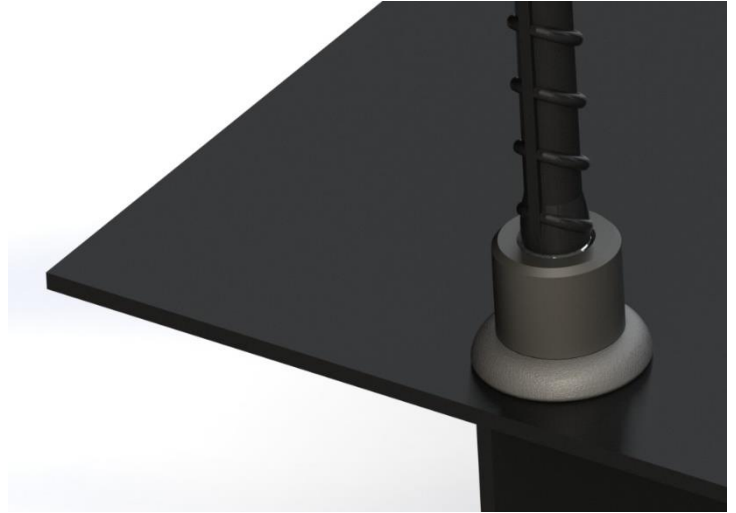


## MECHANICAL REINFORCING BAR SPLICING SYSTEM

### weldCOUP Coupler

#### PROPERTIES

- Meets or exceeds the requirements of major international building codes
- Machined from weldable steel grades
- Special chamfer geometry reduces the required welding area
- Connects structural steel sections or plates to strengthening bar
- Upset Parallel Thread System eliminates losing of connection strength via slipping
- Easy to weld
- Available in sizes 12 mm - 40 mm



Weldcou Couplers are designed to provide a fast connection between reinforcing steel bar perpendicular to structural steel sections and plates. These couplers are machined from weldable steel grades in order to facilitate simple welding process. Typical applications include connecting rebar to structural steel columns and beams. Structural integrity is established by welding before pouring concrete.

Weldcou couplers are designed to meet or exceed major international building codes and Department of Transportation requirements, including:

AASHTO	ACI 349	IBC Type 1 (125% Specified Yield)	NF A 35-020-1
ABNT NBR 8548:1984	ACI 359	IBC Type 2 (Specified Ultimate)	NF EN 1992-1-1
ACI 318 Type 1 (125% Specified Yield)	AS3600	ISO 15835	Turkish Seismic Code 2018
ACI 318 Type 2 (Specified Ultimate)	Eurocode 2	NEN EN 1992-1-1	US Army Corps of Engineers

#### HEADQUARTERS

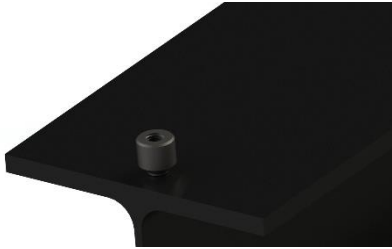
Caferağa Mah. Albay Faik Sözdener Cad.  
No:7/23 Kadıköy- İstanbul / TURKEY  
Phone : +90 216 405 21 55 / PBX  
info@regbar.com

#### PLANT

Sanayi Mah. İzmit Sanayi Sitesi  
13. Cadde 318 Blok Apt. No:318/132  
No:9 İzmit-Kocaeli / TURKEY  
Mobile: +90 541 932 3751

#### RUSSIA BRANCH:

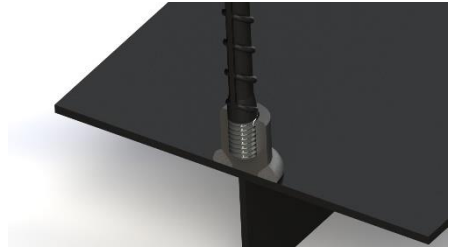
Lesnaya Plaza 4, 4th, Lesnoy Pereulok  
No:24/8125047 Moscow / RUSSIA  
W: +7 (495) 641 37 64

**SIMPLE INSTALLATION**


1. Fit the coupler flush to the material surface.



2. Tack-weld the coupler at least in three positions. Fillet weld to ensure that the coupler is correctly connected.



3. Align the corresponding rebar. Rotate the rebar to the middle of coupler.

Product Code	Metric [mm]	Bar Sizes		Outside Diameter (*)		Length		Unit Weight (*)	
		US	Canada	[mm]	["]	[mm]	["]	[kg]	[lb]
WDCP10	10	#3	-	27	1-1/16	27	1-1/16	0.03	0.07
WDCP12	12	#4	10M	29	1-9/64	32	1-17/64	0.06	0.14
WDCP14	14	-	-	37	1-29/64	39	1-17/32	0.08	0.18
WDCP16	16	#5	15M	39	1-17/32	40	1-37/64	0.12	0.27
WDCP18	18	-	-	42	1-21/32	40	1-37/64	0.13	0.29
WDCP20	20	#6	20M	44	1-47/64	45	1-49/64	0.16	0.36
WDCP22	22	#7	-	48	1-57/64	50	1-31/32	0.17	0.38
WDCP26	26	#8	25M	49	1-59/64	53	2-43/64	0.24	0.53
WDCP28	28	#9	30M	54	2-1/8	55	2-3/32	0.33	0.73
WDCP30	30	-	-	59	2-21/64	55	2-3/32	0.34	0.75
WDCP32	32	#10	-	64	2-33/64	60	2-23/64	0.45	1.00
WDCP36	36	#11	35M	64	2-33/64	65	2-9/16	0.52	1.15

(\*) Bar diameters and weights may vary by country.

**NOTES**

- Dimensions shown in chart are typical.
- Coupler sizes not shown may be available by special order.
- It is recommended to store away the thread protecting caps for reuse.

Regbar Construction  
Reinforcing Bar  
Splicing System  
<http://tiny.cc/regbar>


**HEADQUARTERS**

Caferağa Mah. Albay Faik Sözdener Cad.  
No:7/23 Kadıköy- İstanbul / TURKEY  
Phone : +90 216 405 21 55 / PBX  
info@regbar.com

**PLANT**

Sanayi Mah. İzmit Sanayi Sitesi  
13. Cadde 318 Blok Apt. No:318/132  
No:9 İzmit-Kocaeli / TURKEY  
Mobile: +90 541 932 3751

**RUSSIA BRANCH:**

Lesnaya Plaza 4, 4th, Lesnoy Pereulok  
No:24/8125047 Moscow / RUSSIA  
W: +7 (495) 641 37 64